



BIGHANNA[™] composter

REFERENCES - HOUSING



SKÖVDEBOSTÄDER, ASPÖ GÅRD, SWEDEN

In 2016 the municipal real estate company 'Skövdebostäder' built a new ecological residential area in Aspö. The area represents a unique project with the ambition to create an environmentally profiled residential area with focus on the interaction between people and nature. The architect designed the gardens and planned many practical details such as fruit trees, berry bushes and edible plants that can be used for food or dessert. The household waste will be put into the T120 and the compost will fertilise the area's many gardens. It's all part of a recycling system that aim to create the smallest possible environmental impact.



RIKSBYGGEN SUNNEHUS NR 5, SWEDEN

A Big Hanna Composter model T60 installed in a tenants association with 58 apartments in Sunne



HSB BRF DAGGKÅPAN, UMEÅ, SWEDEN

This tenants association has two Big Hanna composters model T40 installed since 2000.



TIMRÅBO AB, SWEDEN

A housing company owned by the local council invested in ten compost machines in 1996. After evaluating how the compost machines worked they invested in spring 2002 in another 23 compost machines. This gives all tenants in 1900 apartments the possibility to compost their food waste. The Director of AB Timråbo, Per Sandberg, says that the choice was obvious, they know from experience that on-site composting works and they are now self sufficient in taking care of the biodegradable waste from their tenants.





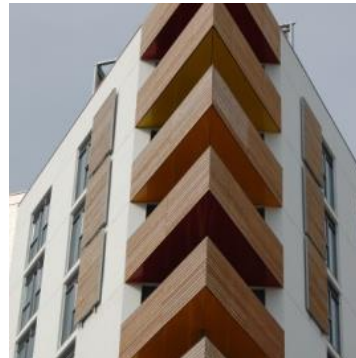
BIGHANNA[™] composter

REFERENCES - HOUSING



SUNHOUSES GÅRDSTENSBOSTÄDER, GÖTEBORG, SWEDEN

In the year 2000 three Big Hanna composters model T120 was installed in Gårdsten, Göteborg. The area is called 'Sunhouses' and involves the rebuilding of three housing areas with solar panels and greenhouses. In every greenhouse there is a Big Hanna composter installed which takes care of the food waste. The tenants put their food waste into the composter and use the compost material as fertilizer in the hotbeds - the cycle is closed. The reconstruction of these housing areas received the 'World Habitat Award' in august 2005. Gårdstensbostäder, the housing company, also have other areas where they exchanged another brand of compost machine to dependable Big Hanna composter in February 2009.



BIOREGIONAL QUINTAIN'S 'ONE BRIGHTON', UK

Model T60 installed in 2009. 'Sustainable living' from choice of construction material to composting feature. One Brighton is one of UK's first 'One Planet Living' communities. The development shows the commitment of both BioRegional Quintain and Crest Nicholson to change the way new homes are designed. The definition of a sustainable lifestyle is defined in the same way as by the United Nations Commission as "Meeting the needs of the present without compromising the ability of future generations to meet their own needs."

The principles are:

1. Zero Carbon
2. Zero Waste
3. Sustainable transport
4. Sustainable materials
5. Local and sustainable food
6. Sustainable water
7. Natural Habitats and wildlife
8. Culture and heritage
9. Equity and fair trade
10. Health and happiness



[Read more about One Planet Brighton.](#)
[See a film about One Planet Brighton on YouTube.](#)

BRF JÄTTENS GÖMME, KUNGÄLV, SWEDEN

Two Big Hanna composters model T60 installed outdoors in a housing area with about 90 apartments. The compost is sifted and put on a maturation bay where the people can collect the compost to use in their gardens.

